



3407 Eddy Street | Port Townsend, Washington 98368
voice 360.385.6786 fax 360.385.2839
email peter@nwwatershed.org | www.nwwatershed.org

CONSERVATION DONORS NEEDED TO PRESERVE THE TARBOO FOREST! INVEST IN PROTECTING FORESTS AND HABITAT ON THE OLYMPIC PENINSULA

We abuse land because we regard it as a commodity belonging to us. When we see land as a community to which we belong, we may begin to use it with love and respect."

-Aldo Leopold, A Sand County Almanac

Northwest Watershed Institute (NWI), a 501(c)3 non-profit conservation group, offers an opportunity to leave a sustainable legacy – a permanently protected forest that will provide wildlife habitat, carbon sequestration, jobs, and forest products on the Olympic Peninsula.

NWI is seeking conservation-minded donors to help in a time-limited opportunity to permanently protect 78 acres of beautiful, mature forestland for addition to the Tarboo Wildlife Preserve; and leverage conservation of an additional 158 acres of adjoining forest. The project represents a critical part of NWI's national awarding-winning efforts to safeguard and restore fish and wildlife habitats of Tarboo Creek watershed and downstream Tarboo-Dabob Bay, with over 2,500 acres conserved to date by a broad coalition of conservation organizations, landowners, and agencies.

Located in Tarboo Creek Watershed, most of the total 236 acres of forest was owned by a Danish corporation that was planning to clear-cut the property and then sell it for development. With loans from private lenders, NWI recently acquired 78 acres of mature forest, and conservation partners Scott and Susan Leopold Freeman acquired the adjoining 158 acres. Susan Leopold Freeman is the granddaughter of Aldo Leopold. The Freeman family purchased the forest in honor of Susan's father Carl Leopold and it is owned by Leopold-Freeman LLC, the family company.



Mike Cronin, forester, and the Freeman family visiting the 78-acre forest purchased with loans by NWI, part of a 236 acre block proposed for conservation easement protection.

Now NWI seeks donors to permanently preserve NWI's 78-acre forest with a conservation easement to be held by Jefferson Land Trust. Under the easement, the forest will be conserved for wildlife habitat, carbon sequestration, and as a regional demonstration site for sustainable, alternative forestry as part of NWI's 316-acre Tarboo Wildlife Preserve.

If NWI can successfully raise funds to secure and place a conservation easement on the 78-acres, Leopold Freeman Forests LLC have generously agreed to donate a conservation easement that would protect, in perpetuity, their adjoining 158 acres of forestland for wildlife habitat and sustainable, selective forestry.

The total cost to complete the 236-acre forest conservation project is \$620,000, which includes NWI's original purchase price of \$550,000 and \$70,000 in associated real estate transaction expenses, including survey, appraisals, and the cost to prepare and transfer a conservation easement to the Land Trust. In 2012 and 2013, Jefferson County's Conservation Futures Fund awarded a total of \$334,000 in grants toward the project. With County support, NWI still needs to raise an additional \$286,000 in private contributions to protect the property, or approximately \$4,000 per acre (rounded to the nearest 1,000).

Your donation also offers a practical, meaningful way to offset your carbon emissions. The conservation easement will prohibit cutting the standing volume of timber of the 78-acre forest¹, storing a minimum of 37.62 metric tons of carbon per acre (or 138 mt of CO2 equivalent)². According to the EPA³ and Union of Concerned Scientists⁴, this level of carbon protected on the 78-acre forest as a whole is equivalent to the annual CO2 output of either 2,106 passenger vehicles, 928 houses, or 562 average North Americans! In sum, your protection of 1 acre would offset about 7 years of your carbon emissions!

PLEASE DONATE TODAY! Make a tax-deductible contribution securely online at www.nwwatershed.org or by mail. NWI's goal is to raise \$286,000 by December of 2013 to protect the property. A donor of more than \$150,000 has the opportunity to dedicate the forest.

Acres of Tarboo Forest protected	1	5	10	78
Donation Level rounded to the nearest 1,000	\$4,000	\$18,000	\$37,000	\$286,000
Carbon offset for average N. American				
One passenger vehicle - years of emissions	27	135	270	2106
Energy use per house - years of emissions	11.9	59.5	119	928.2
Years of total CO2 emissions per person	7.2	36	72	561.6

If NWI cannot raise donations to purchase the property, the property will revert in ownership to the lenders, who could dispose of it for probable clearcutting and development.

¹ Timber volume as measured by the April 2010 detailed timber cruise by Cronin Forestry

² Carbon inventory as measured by the April 2010 Northwest Natural Resources Group NW Neutral Carbon Report.

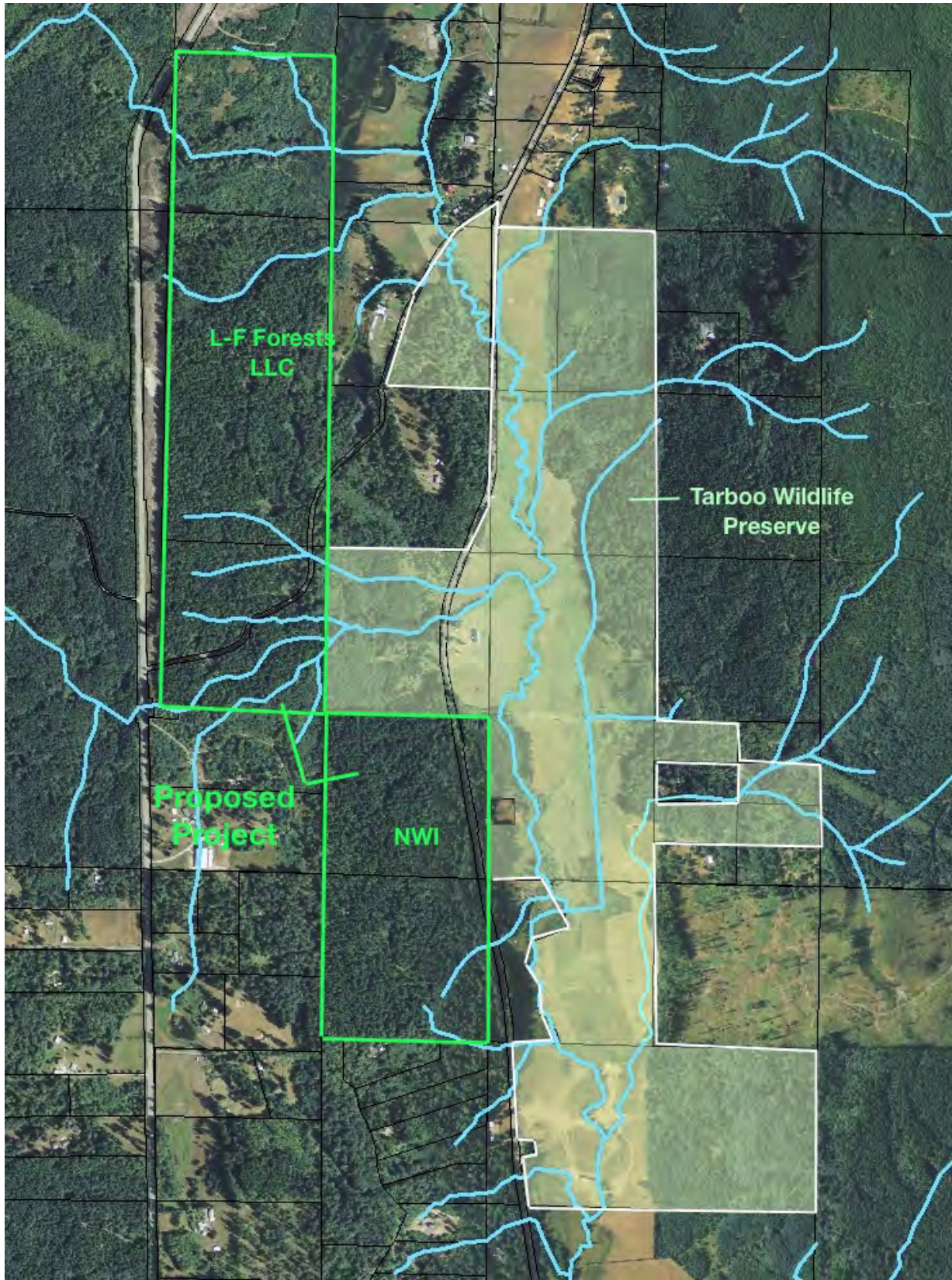
³ Greenhouse Gas Equivalencies calculator <http://www.epa.gov/cleanenergy/energy-resources/calculator.html#results>

⁴ Union of Concerned Scientists – Average N. American consumption is 19.18 metric tons CO2 per person

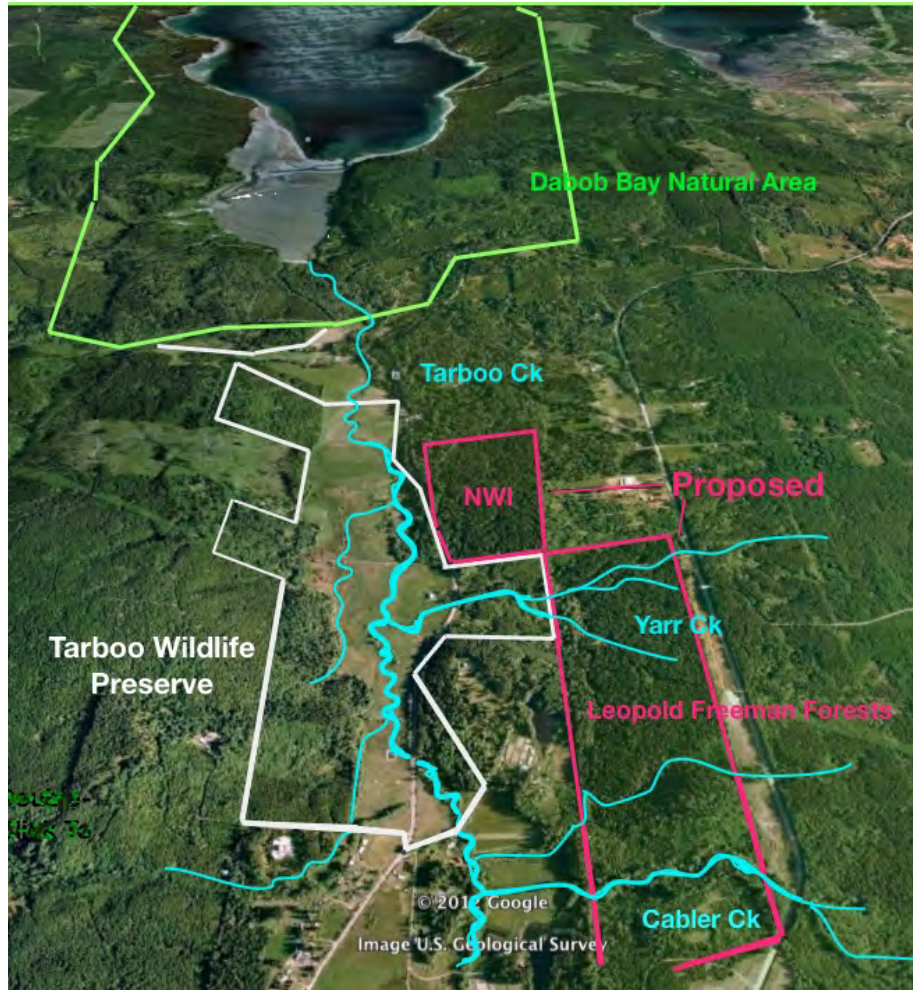
⁵ Based on the average US lifespan of 78 years – Source Center for Disease Control and Prevention

<http://www.cdc.gov/nchs/fastats/deaths.htm>

For more information, please contact Peter Bahls, Executive Director, Northwest Watershed Institute, 3407 Eddy Street, Port Townsend, WA 98368. Phone 360-385-6786. Peter@nwwatershed.org



Map showing the proposed 78-acre forest addition to NWI's Tarboo Wildlife Preserve. Also shown are the adjoining 158-acre Leopold Forest LLC and 18-acre Freeman conservation easement.



View South of the lower Tarboo Valley and Tarboo-Dabob Bay, showing the proposed acquisition in relation to the Tarboo Wildlife Preserve, DNR's Dabob Bay Natural Area, and the Leopold Forest.



Cedar forest on 78-acre NWI forest.